

- ↘ Robust
- ↘ Resistant
- ↘ Sealed

WIRING SOLUTIONS

For mobile machines



HIGH PERFORMANCE PRODUCTS



SEALED AND DURABLE

Dried out fields where agricultural equipment blows up dust. Icy streets that are cleared by snow plows. Soggy forest floors where wood harvesters fight slime and mud.

Utility and special-purpose vehicles have to perform reliably for many years under the most demanding conditions. They need to have a reasonable purchase price and can be repaired or replaced quickly in the event of a failure.

With its XTREME and XLITE product program, Murrelektronik provides components that do exactly that.

XTREME: well equipped

- Designed for temperatures of -40 to +85 °C and for high air humidity
- For on-board voltages of 12V and 24V
- Dust proof and protected against water jets in compliance with IP66K
- Sealed for long-term immersion in compliance with IP68
- Designed for use with high-pressure cleaners
- Vibration and shock resistant
- Resistant even under the influence of UV radiation, manure, oils, lubricants, and many other media
- All metal parts are stainless steel

XLITE: reliable and cost-effective

- Recommended temperature range -25 to +70 °C
- IP65/67 dust-proof and water-proof
- For on-board voltages up to 125V
- Vibration and shock resistant
- Reinforced plastic screws and thread inserts, non-sensitive to oil and salt
- UV-resistant cables

MDC (DEUTSCH®)

- Fully molded PUR cable jacket
- Double seal in cable connection area
- Extremely compact design
- Integrated corrugated tube connection
- Without components or with status LED
- Many different cables and connectors available



MSC (SUPERSEAL)

- Injected PUR cable jacket
- Compact design
- Integrated corrugated tube connection
- Open-ended male and female connectors
- Many different cables and connectors available



CAN

- Injected PUR cable jacket
- Shielded for maximum protection against interference
- M12 stainless steel screws and nuts
- M12 available open-ended or as cordset
- Flange and passive CAN splitter
- Black or violet sheath color



ROUND PLUG CONNECTOR M12

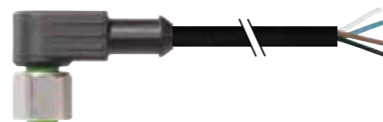
With free cable end

- 4-pin
- Profile seal
- Protection rating IP66K/68
- Stainless steel metal parts

Socket
Straight



Socket
Angled



1 Form	No.	12221	12341
Suppression		max. 250 V AC/DC, 4 A Without suppression	max. 250 V AC/DC, 4 A Without suppression
Pin assignment/wiring diagram			
2 Cable type	Jacket color	Jacket color	Jacket color
Wire cross section 0.5 mm ² PUR (UL/CSA rated)	black 737	black 737	black 737
3 Cable length			
1.5 m	0150		
3.0 m	0300		
5.0 m	0500		
7.5 m	0750		
10.0 m	1000		
Item number:			
Xtreme	<u>7</u> <u>0</u> <u>7</u> <u>2</u> - - - -	- - - -	- - - -
xLite	<u>7</u> <u>0</u> <u>7</u> <u>5</u> - - - -	- - - -	- - - -
	1 Form	2 Cable length	3 Cable length

Note: Different cable lengths up to 2 m available in 0.2 m increments, starting with 2 m in 0.5 m increments.

ROUND PLUG CONNECTOR M12 – M12

Connecting Wires

- 4-pin
- Profile seal
- Protection rating IP66K/68
- Stainless steel metal parts

Plug
Straight



Socket
Straight

Plug
Straight



Socket
Angled

1 Form	No.	40021	40121
Suppression		max. 250 V AC/DC, 4 A Without suppression	max. 250 V AC/DC, 4 A Without suppression
Pin assignment/wiring diagram			
2 Cable type	Jacket color	Jacket color	Jacket color
Wire cross section 0.5 mm ² PUR (UL/CSA rated)	black 737	black 737	black 737
3 Cable length			
0.3 m	0030		
0.6 m	0060		
1.0 m	0100		
1.5 m	0150		
2.0 m	0200		
Item number:			
Xtreme	<u>7</u> <u>0</u> <u>7</u> <u>2</u> - - - -	- - - -	- - - -
xLite	<u>7</u> <u>0</u> <u>7</u> <u>5</u> - - - -	- - - -	- - - -
	1 Form	2 Cable length	3 Cable length

Note: Different cable lengths up to 2 m available in 0.2 m increments, starting with 2 m in 0.5 m increments.

VALVE PLUG

With free cable end

- 2-pin
- Stainless steel center screw
- Silicon gasket
- Protection rating IP66K/68

Form A (18 mm)



1 Form	No.	18021	18031	18081
Suppression		12–24 V AC/DC, 4 A LED and Z diodes	12–24 V DC, 4 A LED and freewheeling diode	max. 230 V AC/DC, 10 A Without suppression
Pin assignment/wiring diagram				
2 Cable type	Jacket color	black 754	black 754	black 754
	Wire cross section 0.75 mm ² PUR (UL/CSA rated)			
3 Cable length				
	1.5 m	0150		
	3.0 m	0300		
	5.0 m	0500		
	7.5 m	0750		
	10.0 m	1000		
Item number:				
	Xtreme	<u>7</u> <u>0</u> <u>7</u> <u>2</u> - - - -	- - - -	- - - -
	xLite	<u>7</u> <u>0</u> <u>7</u> <u>5</u> - - - -	- - - -	- - - -
		1 Form	2 Cable length	3 Cable length

Note

Different cable lengths up to 2 m available in 0.2 m increments, starting with 2 m in 0.5 m increments.

VALVE PLUG – M12

Connecting Wires

- 2-pin
- Stainless steel metal parts
- Silicon gasket
- Protection rating IP66K/68

Form A (18 mm)

M12 plug
Straight



1 Form	No.	40881	40871	40885
Suppression		12–24 V AC/DC, 4 A LED and Z diodes	12–24 V DC, 4 A LED and freewheeling diode	max. 230 V AC/DC, 4 A Without suppression
Pin assignment/wiring diagram				
2 Cable type	Jacket color	black 754	black 754	black 754
	Wire cross section 0.75 mm ² PUR (UL/CSA rated)			
3 Cable length				
	0.3 m	0030		
	0.6 m	0060		
	1.0 m	0100		
	1.5 m	0150		
	2.0 m	0200		
Item number:				
	Xtreme	<u>7</u> <u>0</u> <u>7</u> <u>2</u> - - - -	- - - -	- - - -
	xLite	<u>7</u> <u>0</u> <u>7</u> <u>5</u> - - - -	- - - -	- - - -
		1 Form	2 Cable length	3 Cable length

Note

Different cable lengths up to 2 m available in 0.2 m increments, starting with 2 m in 0.5 m increments.

VALVE PLUG

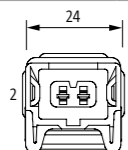
With free cable end

- 2-pin
- Stainless steel locking spring
- Protection rating IP66K/68

Junior Timer
Straight



1 Form	No.	70001	70021	70061
Suppression		max. 230 V AC/DC, 4 A Without suppression	12-24 V AC/DC, 4 A LED	12-24 V AC/DC, 4 A LED and suppression
Pin assignment/wiring diagram				



2 Cable type	Jacket color	Jacket color	Jacket color
Wire cross section 0.5 mm ² PUR	black 740*	black 740*	black 740*
Wire cross section 0.75 mm ² PUR (UL/CSA rated) PUR/PVC	754 750	750	750

3 Cable length	
1.5 m	0150
3.0 m	0300
5.0 m	0500
7.5 m	0750
10.0 m	1000

Item number:	
Xtreme	<u>7</u> <u>0</u> <u>7</u> <u>2</u> - - - - -

1 Form	2 Cable length	3 Cable length
---------------	-----------------------	-----------------------

Note: Different cable lengths up to 2 m available in 0.2 m increments, starting with 2 m in 0.5 m increments.

VALVE PLUG

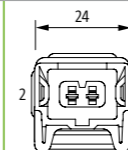
With free cable end

- 2-pin
- Stainless steel locking spring
- Protection rating IP66K/68

Junior Timer
Angled



1 Form	No.	70301	70321	70361
Suppression		max. 230 V AC/DC, 4 A Without suppression	12-24 V AC/DC, 4 A LED	12-24 V AC/DC, 4 A LED and suppression
Pin assignment/wiring diagram				



2 Cable type	Jacket color	Jacket color	Jacket color
Wire cross section 0.5 mm ² PUR	black 740*	black 740*	black 740*
Wire cross section 0.75 mm ² PUR (UL/CSA rated) PUR/PVC	754 750	750	750

3 Cable length	
1.5 m	0150
3.0 m	0300
5.0 m	0500
7.5 m	0750
10.0 m	1000

Item number:	
Xtreme	<u>7</u> <u>0</u> <u>7</u> <u>2</u> - - - - -

1 Form	2 Cable length	3 Cable length
---------------	-----------------------	-----------------------

Note: Different cable lengths up to 2 m available in 0.2 m increments, starting with 2 m in 0.5 m increments.

VALVE PLUG – M12

- Connecting Wires**
- 2-pin
 - Stainless steel metal parts
 - Protection rating IP66K/68

Junior Timer
Straight

M12 plug
Straight



1 Form	No.	43001	43011	43021
Suppression		max. 230 V AC/DC, 4 A Without suppression	12–24 V AC/DC, 4 A LED	12–24 V AC/DC, 4 A LED and suppression
Pin assignment/wiring diagram				
2 Cable type	Jacket color			
Wire cross section 0.5 mm ²	black	black	black	black
PUR	740*	740*	740*	740*
Wire cross section 0.75 mm ²				
PUR (UL/CSA rated)	754	750	750	750
PUR/PVC	750	750	750	750
3 Cable length				
0.3 m	0030			
0.6 m	0060			
1.0 m	0100			
1.5 m	0150			
2.0 m	0200			
Item number:				
Xtreme	<u>7</u> <u>0</u> <u>7</u> <u>2</u>	- - - - -	- - - - -	- - - - -
xLite	<u>7</u> <u>0</u> <u>7</u> <u>5</u>	- - - - -	- - - - -	- - - - -
		1 Form	2 Cable length	3 Cable length

Note
Different cable lengths up to 2 m available in 0.2 m increments, starting with 2 m in 0.5 m increments.

VALVE PLUG – M12

- Connecting Wires**
- 2-pin
 - Stainless steel metal parts
 - Protection rating IP66K/68

Junior Timer
Angled

M12 plug
Straight



1 Form	No.	43031	43041	43051
Suppression		max. 230 V AC/DC, 4 A Without suppression	12–24 V AC/DC, 4 A LED	12–24 V AC/DC, 4 A LED and suppression
Pin assignment/wiring diagram				
2 Cable type	Jacket color			
Wire cross section 0.5 mm ²	black	black	black	black
PUR	740*	740*	740*	740*
Wire cross section 0.75 mm ²				
PUR (UL/CSA rated)	754	750	750	750
PUR/PVC	750	750	750	750
3 Cable length				
0.3 m	0030			
0.6 m	0060			
1.0 m	0100			
1.5 m	0150			
2.0 m	0200			
Item number:				
Xtreme	<u>7</u> <u>0</u> <u>7</u> <u>2</u>	- - - - -	- - - - -	- - - - -
xLite	<u>7</u> <u>0</u> <u>7</u> <u>5</u>	- - - - -	- - - - -	- - - - -
		1 Form	2 Cable length	3 Cable length

Note
Different cable lengths up to 2 m available in 0.2 m increments, starting with 2 m in 0.5 m increments.

VALVE PLUG

With free cable end

- 2-pin
- Corrugated tube connection
- Protection rating IP66K/68

Deutsch® MDC06-2S
Plug with female contacts



Deutsch® MDC04-2P
Socket with pin contacts



1 Form	No.	72011	72301										
Suppression		12-230 V AC/DC, 8 A Without suppression	12-230 V AC/DC, 8 A Without suppression										
Pin assignment/wiring diagram													
2 Cable type	Jacket color	<table border="1"> <thead> <tr> <th>Wire cross section 0.75 mm²</th> <th>yellow</th> <th>black</th> </tr> </thead> <tbody> <tr> <td>PUR</td> <td>145</td> <td>754</td> </tr> </tbody> </table>		Wire cross section 0.75 mm ²	yellow	black	PUR	145	754				
Wire cross section 0.75 mm ²	yellow	black											
PUR	145	754											
3 Cable length		<table border="1"> <tbody> <tr><td>1.5 m</td><td>0150</td></tr> <tr><td>2.0 m</td><td>0200</td></tr> <tr><td>5.0 m</td><td>0500</td></tr> <tr><td>7.5 m</td><td>0750</td></tr> <tr><td>10.0 m</td><td>1000</td></tr> </tbody> </table>		1.5 m	0150	2.0 m	0200	5.0 m	0500	7.5 m	0750	10.0 m	1000
1.5 m	0150												
2.0 m	0200												
5.0 m	0500												
7.5 m	0750												
10.0 m	1000												
Item number:		<table border="1"> <tbody> <tr> <td>Xtreme</td> <td><u>7</u> <u>0</u> <u>7</u> <u>2</u></td> <td>-</td> <td>-</td> <td>-</td> <td>-</td> </tr> </tbody> </table>		Xtreme	<u>7</u> <u>0</u> <u>7</u> <u>2</u>	-	-	-	-				
Xtreme	<u>7</u> <u>0</u> <u>7</u> <u>2</u>	-	-	-	-								
		1 Form	2 Cable length	3 Cable length									

Note: Different cable lengths up to 2 m available in 0.2 m increments, starting with 2 m in 0.5 m increments.

VALVE PLUG

With free cable end

- 3-pin
- Corrugated tube connection
- Protection rating IP66K/68

Deutsch® MDC06-3S
Plug with female contacts



Deutsch® MDC04-3P
Socket with pin contacts



1 Form	No.	72081	72381										
Suppression		6-230 V AC/DC, 8 A Without suppression	6-230 V AC/DC, 8 A Without suppression										
Pin assignment/wiring diagram													
2 Cable type	Jacket color	<table border="1"> <thead> <tr> <th>Wire cross section 0.75 mm²</th> <th>black</th> </tr> </thead> <tbody> <tr> <td>PUR</td> <td>564</td> </tr> </tbody> </table>		Wire cross section 0.75 mm ²	black	PUR	564						
Wire cross section 0.75 mm ²	black												
PUR	564												
3 Cable length		<table border="1"> <tbody> <tr><td>1.5 m</td><td>0150</td></tr> <tr><td>2.0 m</td><td>0200</td></tr> <tr><td>5.0 m</td><td>0500</td></tr> <tr><td>7.5 m</td><td>0750</td></tr> <tr><td>10.0 m</td><td>1000</td></tr> </tbody> </table>		1.5 m	0150	2.0 m	0200	5.0 m	0500	7.5 m	0750	10.0 m	1000
1.5 m	0150												
2.0 m	0200												
5.0 m	0500												
7.5 m	0750												
10.0 m	1000												
Item number:		<table border="1"> <tbody> <tr> <td>Xtreme</td> <td><u>7</u> <u>0</u> <u>7</u> <u>2</u></td> <td>-</td> <td>-</td> <td>-</td> <td>-</td> </tr> </tbody> </table>		Xtreme	<u>7</u> <u>0</u> <u>7</u> <u>2</u>	-	-	-	-				
Xtreme	<u>7</u> <u>0</u> <u>7</u> <u>2</u>	-	-	-	-								
		1 Form	2 Cable length	3 Cable length									

Note: Different cable lengths up to 2 m available in 0.2 m increments, starting with 2 m in 0.5 m increments.

VALVE PLUG

With free cable end

- 4-pin
- Corrugated tube connection
- Protection rating IP66K/68

Deutsch® MDC06-4S
Plug with female contacts



Deutsch® MDCY06-4S
Plug with female contacts



Deutsch® MDC04-4P
Socket with pin contacts



1 Form	No.	72161	72191	72461
Suppression		6-230 V AC/DC, 8 A Without suppression	6-230 V AC/DC, 8 A Without suppression	6-230 V AC/DC, 8 A Without suppression
Pin assignment/wiring diagram				
2 Cable type	Jacket color	black 569	black 754	black 569
3 Cable length		1.5 m: 0150 2.0 m: 0200 5.0 m: 0500 7.5 m: 0750 10.0 m: 1000		
Item number:		Xtreme <u>7</u> <u>0</u> <u>7</u> <u>2</u> - - - -		
		1 Form	2 Cable length	3 Cable length

Note: Different cable lengths up to 2 m available in 0.2 m increments, starting with 2 m in 0.5 m increments.

VALVE PLUG

With free cable end

- 6-pin
- Corrugated tube connection
- Protection rating IP66K/68

Deutsch® MDC06-6S
Plug with female contacts



Deutsch® MDC04-6P
Socket with pin contacts



1 Form	No.	72221	72521
Suppression		6-230 V AC/DC, 8 A Without suppression	6-230 V AC/DC, 8 A Without suppression
Pin assignment/wiring diagram			
2 Cable type	Jacket color	black 572	black 572
3 Cable length		1.5 m: 0150 2.0 m: 0200 5.0 m: 0500 7.5 m: 0750 10.0 m: 1000	
Item number:		Xtreme <u>7</u> <u>0</u> <u>7</u> <u>2</u> - - - -	
		1 Form	2 Cable length
			3 Cable length

Note: Different cable lengths up to 2 m available in 0.2 m increments, starting with 2 m in 0.5 m increments.

VALVE PLUG

With free cable end

- 2-pin
- Corrugated tube connection
- Degree of protection IP67

SuperSeal® MSC1.5-2S
Plug with female contacts



SuperSeal® MSC1.5-2P
Socket with pin contacts



1 Form	No.	73001	73301
Suppression		max. 24 V AC/DC, 8 A Without suppression	max. 24 V AC/DC, 8 A Without suppression
Pin assignment/wiring diagram			
2 Cable type	Jacket color		
Wire cross section 0.75 mm ² PUR (UL)	black 512	black 512	
3 Cable length			
1.5 m	0150		
2.0 m	0200		
5.0 m	0500		
7.5 m	0750		
10.0 m	1000		
Item number:			
Xtreme	<u>7</u> <u>0</u> <u>7</u> <u>2</u> - - - - -	- - - - -	- - - - -
	1 Form	2 Cable length	3 Cable length

Note: Different cable lengths up to 2 m available in 0.2 m increments, starting with 2 m in 0.5 m increments.

VALVE PLUG

With free cable end

- 3-pin
- Corrugated tube connection
- Degree of protection IP67

SuperSeal® MSC1.5-3S
Plug with female contacts



SuperSeal® MSC1.5-3P
Socket with pin contacts



1 Form	No.	73081	73381
Suppression		max. 24 V AC/DC, 8 A Without suppression	max. 24 V AC/DC, 8 A Without suppression
Pin assignment/wiring diagram			
2 Cable type	Jacket color		
Wire cross section 0.75 mm ² PUR (UL)	black 513	black 513	
3 Cable length			
1.5 m	0150		
2.0 m	0200		
5.0 m	0500		
7.5 m	0750		
10.0 m	1000		
Item number:			
Xtreme	<u>7</u> <u>0</u> <u>7</u> <u>2</u> - - - - -	- - - - -	- - - - -
	1 Form	2 Cable length	3 Cable length

Note: Different cable lengths up to 2 m available in 0.2 m increments, starting with 2 m in 0.5 m increments.

CAN

With free cable end

- 5-pin
- Shielded
- Protection rating IP65/67
- Stainless steel metal parts

CANopen, CAN SAE J1939
Plug, straight



CANopen, CAN SAE J1939
Socket, straight



1 Form	No.	13105	13225										
Suppression	max. 60 V AC/DC, 4 A Without suppression		max. 60 V AC/DC, 4 A Without suppression										
Pin assignment/wiring diagram													
2 Cable type	Wire cross section	2 x 0.24/2 x 0.38 mm ² PUR (UL/CSA rated)											
	Jacket color	<table border="1"> <tr> <th>violet</th> <th>black</th> </tr> <tr> <td>803</td> <td>838</td> </tr> </table>		violet	black	803	838						
violet	black												
803	838												
3 Cable length		<table border="1"> <tr> <td>1.5 m</td> <td>0150</td> </tr> <tr> <td>2.0 m</td> <td>0200</td> </tr> <tr> <td>5.0 m</td> <td>0500</td> </tr> <tr> <td>7.5 m</td> <td>0750</td> </tr> <tr> <td>10.0 m</td> <td>1000</td> </tr> </table>		1.5 m	0150	2.0 m	0200	5.0 m	0500	7.5 m	0750	10.0 m	1000
1.5 m	0150												
2.0 m	0200												
5.0 m	0500												
7.5 m	0750												
10.0 m	1000												
Item number:	<table border="1"> <tr> <td><u>7</u> <u>0</u> <u>0</u> <u>2</u></td> <td>-</td> <td>-</td> <td>-</td> </tr> </table>			<u>7</u> <u>0</u> <u>0</u> <u>2</u>	-	-	-						
<u>7</u> <u>0</u> <u>0</u> <u>2</u>	-	-	-										
	1 Form	2 Cable length	3 Cable length										

Note Different cable lengths up to 2 m available in 0.2 m increments, starting with 2 m in 0.5 m increments.

CAN

Connecting Wires

- 5-pin
- Shielded
- Protection rating IP65/67
- Stainless steel metal parts

CANopen, CAN SAE J1939
Plug, straight Socket, straight



1 Form	No.	40531											
Suppression	max. 60 V AC/DC, 4 A Without suppression												
Pin assignment/wiring diagram													
2 Cable type	Wire cross section	2 x 0.24/2 x 0.38 mm ² PUR (UL/CSA rated)											
	Jacket color	<table border="1"> <tr> <th>violet</th> <th>black</th> </tr> <tr> <td>803</td> <td>838</td> </tr> </table>		violet	black	803	838						
violet	black												
803	838												
3 Cable length		<table border="1"> <tr> <td>0.3 m</td> <td>0030</td> </tr> <tr> <td>0.6 m</td> <td>0060</td> </tr> <tr> <td>1.0 m</td> <td>0100</td> </tr> <tr> <td>1.5 m</td> <td>0150</td> </tr> <tr> <td>2.0 m</td> <td>0200</td> </tr> </table>		0.3 m	0030	0.6 m	0060	1.0 m	0100	1.5 m	0150	2.0 m	0200
0.3 m	0030												
0.6 m	0060												
1.0 m	0100												
1.5 m	0150												
2.0 m	0200												
Item number:	<table border="1"> <tr> <td><u>7</u> <u>0</u> <u>0</u> <u>2</u></td> <td>-</td> <td>-</td> <td>-</td> </tr> </table>		<u>7</u> <u>0</u> <u>0</u> <u>2</u>	-	-	-							
<u>7</u> <u>0</u> <u>0</u> <u>2</u>	-	-	-										
	1 Form	2 Cable length	3 Cable length										

Note Different cable lengths up to 2 m available in 0.2 m increments, starting with 2 m in 0.5 m increments.

CAN

With free cable end

- 5-pin
- Shielded
- Protection rating IP65/67

CANopen, CAN SAE J1939
Plug, straight



1 Form	No. 13531				
Suppression	max. 60 V AC/DC, 4 A Without suppression				
Pin assignment/wiring diagram	 				
2 Cable type	Jacket color				
Wire cross section 2 x 0.25/2 x 0.34 mm ² PUR (UL/CSA rated)	<table border="1"> <tr> <td>violet</td> <td>black</td> </tr> <tr> <td>803</td> <td>838</td> </tr> </table>	violet	black	803	838
violet	black				
803	838				
3 Cable length					
1.5 m	0150				
2.0 m	0200				
5.0 m	0500				
7.5 m	0750				
10.0 m	1000				
Item number:					
	7 0 0 0 - - - - -				
	1 Form 2 Cable length 3 Cable length				

Note Different cable lengths up to 2 m available in 0.2 m increments, starting with 2 m in 0.5 m increments.

CONNECTION ACCESSORIES

Accessories		Art. no.
	CAN passive splitter Plastic housing	277080
	CAN passive splitter Metal housing	277289
	CAN T-piece Unshielded, stainless steel	7002-42751-0000000
	CAN termination connector 120 ohm, stainless steel	7002-13471-0000000
	CAN termination plug 120 ohm, stainless steel	7002-13461-0000000
	M12 flange bushing 5-pin, stainless steel	7002-42111-0000000
	M12 locking screw Plastic	58627
	M12 sealing cap Plastic (VE4)	56951
	M12 locking screw Stainless steel	996076
	M12 sealing cap Stainless steel	7004-99924-0000000

M12 DISTRIBUTION SYSTEMS

For sensors and actuators

- Protection rating IP65/67
- Highly flexible cable
- Completely molded

Exact12
4-fold



Exact12
8-fold



1 Form	No.	84510	84512	88510	88512
Suppression	5-pin	5-pin	5-pin; without LED	5-pin	5-pin; without LED
		18-30.2 V DC; max. 12 A	0-125 V AC/DC; max. 12 A	18-30.2 V DC; max. 12 A	0-125 V AC/DC; max. 12 A

Pin assignment

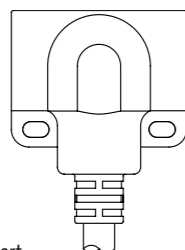
General information:

- Contact 1: (+)
- Contact 2: (N/C)/(S2)
- Contact 3: (-)
- Contact 4: (N/O)/(S1)
- Contact 5: (Ground)

Status indicator:

- LED green, power
- LED yellow, signal (S1)
- LED white, signal (S2)

M12 females
5-pole



For 2 signals per port

2 Cable type	Jacket color	Jacket color
Wire cross section 8 x 0.5/3 x 1.0 mm ²	black	black
PUR (UL/CSA), halogen-free	445	445
Wire cross section 16 x 0.5/3 x 1.0 mm ²		black
PUR (UL/CSA), halogen-free		456

3 Cable length	
3.0 m	0300
5.0 m	0500
10.0 m	1000
15.0 m	1500
20.0 m	2000
25.0 m	2500
30.0 m	3000

Item number:

8 0 0 0 - - - - - - - - - -

1 Form **2** Cable length **3** Cable length

Note
Figures may vary

M12 DISTRIBUTION SYSTEMS

For sensors and actuators

- Protection rating IP66K/68
- Ultrabright LEDs
- Highly flexible cable
- Stainless steel metal parts
- Fully encapsulated

MVP12 Xtreme
8-fold



1 Form	No.	68410	68510
Suppression	4-pin	4-pin	5-pin
		12-32 V DC, max. 12 A	12-32 V DC, max. 12 A

Pin assignment

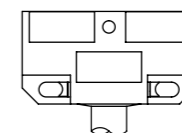
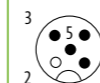
General information:

- Contact 1: (+)
- Contact 2: (N/C)/(S2)
- Contact 3: (-)
- Contact 4: (N/O)/(S1)
- Contact 5: (Ground)

Status indicator:

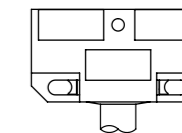
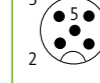
- LED green, power
- LED yellow, signal (S1)
- LED white, signal (S2)

M12 females
4-pole



For 1 signal per port

M12 female
5-pole



For 2 signals per port

2 Cable type	Jacket color	Jacket color
Wire cross section 8 x 0.5/3 x 1.0 mm ²	black	black
PUR (UL/CSA), halogen-free	445	445
Wire cross section 16 x 0.5/3 x 1.0 mm ²		black
PUR (UL/CSA), halogen-free		456

3 Cable length	
3.0 m	0300
5.0 m	0500
10.0 m	1000
15.0 m	1500
20.0 m	2000
25.0 m	2500
30.0 m	3000

Item number:

Xtreme 8 0 7 2 - - - - - - - - - -

1 Form **2** Cable length **3** Cable length

Note



➔ www.murrelektronik.com

The information in this brochure has been compiled with the greatest possible care. Liability for the correctness, completeness, and currentness of the information is restricted to gross negligence.

Our company is committed to social responsibility in all aspects of our business activities. Our brochures are printed using environmentally friendly production techniques and products.

